



1600CFM SERIES

TIER 4 FINAL \ CUMMINS ENGINE \ PORTABLE COMPRESSOR \ VARIABLE PRESSURE



1600CFM/150PSI



Dependable by design.™

SPECIFICATIONS

Compressor

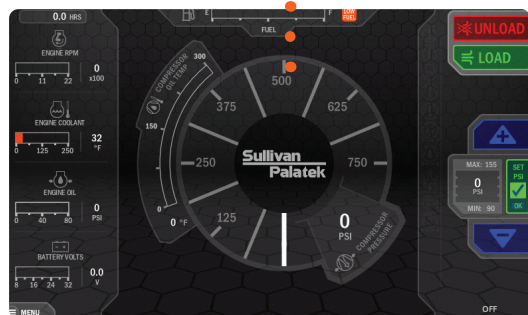
Model	D1600PH1CU4
Rated Delivery	1600 CFM (45 m ³ /min)
Rated Operating Pressure	150 psig (10.4 Bar)
Operating Pressure Range	90-170 psig (6.2 - 11.3 Bar)
Estimated Weight, Serviced	19,500 lbs
Dimensions L x W x H (in")	254.31" x 90.15" x 111.82"

Engine

Model	Diesel
Make & Model	CUMMINS QSX 15 TIER 4 FINAL
Idle Speed	1400 RPM
Fuel Tank Capacity	224 gal (848 L)
Horsepower @ rated RPM	535 hp
Full Load Speed	2100 RPM
DEF Volume	15 gal. (56.7 L)



Sullivan-Palatek Electronic Controller (SPEC)



Pressure Selection Screen



FEATURES

- » Large 321mm Diameter Twin Screw Direct Drive
- » Air End Manufactured by Sullivan-Palatek Comes With Exclusive Three Year Warranty
- » 10" Closed Start, Inlet Valve
- » Ambient Oper. Temp. Range: -40° to + 125°F (-40° to +52°C)
- » 3" Service Connection
- » Oil Level Sight Gauge
- » Cummins Engine
- » Steel Fuel Tank (TC Certified)
- » Four Point Lifting Bail
- » Dual Axle Running Gear
- » Electric Brakes
- » Adjustable 3" Lunette Eye
- » Automatic Shutdown and Protection System
- » Containment Base
- » Large Service Doors for Easy Maintenance
- » Automatic Blowdown Valve
- » Dual Air Outlets (with Aftercooler option)

CONTROLLER

Sullivan-Palatek Electronic Controller (SPEC)

Digital Readouts:

- » Compressor temperature
- » Discharge Pressure
- » Engine oil pressure
- » Engine Coolant temperature
- » Voltmeter
- » Tachometer
- » Fuel level - low fuel warning and shutdown
- » Complete engine diagnostic tool
- » Unit converter
- » Multilingual capabilities
- » Waterproof IP66/67
- » Air Filter Service
- » After cooler filter warning

Sullivan-Palatek, Inc.

1201 West US Highway 20
Michigan City, IN 46360

219.874.2497

sullivan-palatek.com

info@palatek.com

Smart Pump Solutions

6606 Gessner Rd.
Houston, Texas 77040
+1 (281) 944 - 9377

www.smartpumpsolutions.com

