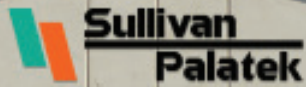


D185 TITAN TOPS AND TITAN GUARDS

PKR / PDKR / PIZP / PIZ4
DEPENDABLE BY DESIGN



Sullivan
Palatek



Sullivan-Palatek, based in Michigan City, excels in high-end portable air compressors, with a focus on reliability and American job support through local assembly. Their value proposition includes quality, efficiency, customer support, cost-effectiveness, sustainability, expertise, and compliance. With a track record of over 1,000 years of collective knowledge, Sullivan-Palatek is a trusted and stable choice for compressed air needs.

1868

Sullivan company is founded and becomes pioneer in air compressor design and manufacturing

1927

Provided a full range of industrial and portable air compressors. Established leading position in air compressor industry

1998

Electric and portable compressor companies joined together under the trade name Sullivan-Palatek

2016

Sullivan-Palatek has TIER 4 Final configuration available in all sizes of engine-driven compressors offered

2024

D185 Titan Tops and Titan Guard lead portable compressor division



D185PKR



D185PDKR



D185PIZ4



D185PIZP



D185PKR TITAN TOP

PORTABLE COMPRESSOR 185 CFM



The D185PKR Kohler powered portable air compressor is noticeably different from any other portable compressor in the Sullivan-Palatek product lineup. The 185 cfm/100 psig unit features a durable but lightweight Titan Top canopy design for access to all routine serviceable components, such as the spin-on oil filter and separator. Compact in design, the unit is also equipped with a foldable drawbar to minimize its overall footprint in shipping and storage.

Internally the D185PKR is powered by a 48.8 hp Tier 4 Final Kohler engine and boasts a Sullivan-Palatek factory made 108 mm rotary screw air end at its core. The compressor also features side by side coolers for the compressor and engine, a large curbside toolbox for storage, a 10-hour full shift 30-gallon composite fuel tank with fuel level visibility, and a state-of-the-art curbside controller.

Compressor

Model	D185PKR
Rated Delivery	185 cfm (5.2 m ³ /min)
Rated Operating Pressure	100 psig (6.9 bar)
Operating Pressure Range	70-125 psig (4.9 - 8.6 bar)
Air Discharge Outlet Size	3/4" NPT
Air Discharge Outlet Quantity	2
Estimated Weight, Serviced	2200 lbs (997 kg)
Dimensions L x W x H in" (mm)	126.5 x 63.5 x 63 (3213 x 1612 x 1600)

Engine

Type	Diesel
Make & Model	Kohler D1903 Tier 4 Final
Idle Speed	1650 rpm
Fuel Tank Capacity	30 gal (113.5 L)
Horsepower @ Rated rpm	48.8 @ 2600 rpm
Full Load Speed	2400 rpm

FEATURES

COMPRESSOR

- » Sullivan-Palatek factory designed and manufactured 108mm Diameter twin screw Air End
- » Three year unlimited hour Air End warranty
- » Automatic 0 to 100% capacity control
- » Automatic shutdown and protection system
- » Automatic blowdown valve
- » Unloaded starting
- » Spin on oil filter/separator
- » Two Stage dry type air filter
- » Multiple service connections
- » Oil level sight gauge
- » Side by side coolers for compressor and engine
- » Cooler cleanout access for cleaning
- » Large curbside toolbox for storage
- » Composite fuel tank with fuel level visibility
- » Full shift (10 hour shift) 30 gallon fuel tank
- » 2.3 Gal per hour

EXTERIOR

- » Composite Titan Top Canopy design
- » Safety chains for towing
- » 13" Wheels
- » Choice of lunnette eye or ball hitch on a foldable drawbar
- » LED Tail Lights
- » Designed to work at ambient temperatures ranging from\ 10 °F to +120°F
- » Cold Weather Package Option: -20°F: Includes battery heaters, engine block heater, control system heater

CONTROLLER

Sullivan-Palatek Electronic Controller (SPEC)

Digital Readouts:

- » Compressor temperature
- » Engine oil pressure
- » System Pressure
- » Engine Load
- » Engine temperature
- » Voltmeter
- » Tachometer
- » Complete engine diagnostic tool
- » Unit converter
- » Multilingual capabilities



D185PDKR TITAN TOP

DUAL PRESSURE PORTABLE COMPRESSOR

185 CFM/100 PSIG, 150 CFM/150 PSIG



Our D185PDKR Kohler powered portable air compressor is now available with Dual Pressure. The 185 cfm/100 psig, 150 cfm/150 psig unit features a durable but lightweight Titan Top canopy design for access to all routine serviceable components, such as the spin-on oil filter and separator. Compact in design, the unit is also equipped with a foldable drawbar to minimize its overall footprint in shipping and storage.

Internally the D185PDKR is powered by a 48.8 hp Tier 4 Final Kohler engine, a Sullivan-Palatek factory made 108 mm rotary screw air end at its core, side by side coolers for the compressor and engine, a large curbside toolbox for storage, a 10-hour full shift 30-gallon composite fuel tank with fuel level visibility, and a state-of-the-art curbside controller.

FEATURES

COMPRESSOR

- » Sullivan-Palatek factory designed and manufactured 108mm Diameter twin screw Air End
- » Three year unlimited hour Air End warranty
- » Automatic 0 to 100% capacity control
- » Automatic shutdown and protection system
- » Automatic blowdown valve
- » Unloaded starting
- » Spin on oil filter/separator
- » Two Stage dry type air filter
- » Multiple service connections
- » Oil level sight gauge
- » Side by side coolers for compressor and engine
- » Cooler cleanout access for cleaning
- » Large curbside toolbox for storage
- » Composite fuel tank with fuel level visibility
- » Full shift (10 hour shift) 30 gallon fuel tank
- » 2.8 / 2.4 Gal per hour

EXTERIOR

- » Composite Titan Top Canopy design
- » Safety chains for towing
- » 13" Wheels
- » Choice of lunette eye or ball hitch on a foldable drawbar
- » LED Tail Lights
- » Designed to work at ambient temperatures ranging from\ 10 °F to +120°F
- » Cold Weather Package Option: -20°F: Includes battery heaters, engine block heater, control system heater

CONTROLLER

Sullivan-Palatek Electronic Controller (SPEC)

Digital Readouts:

- » Compressor temperature
- » Engine oil pressure
- » System Pressure
- » Engine Load
- » Engine temperature
- » Voltmeter
- » Tachometer
- » Complete engine diagnostic tool
- » Unit converter
- » Multilingual capabilities

Compressor

Model	D185PDKR
Rated Delivery @ Rated Pressure	185 cfm @ 100 psig / 150 cfm @ 150 psig
Operating Pressure Range	70 - 170 psig (4.8 - 11.7 bar)
Air Discharge Outlet Size	3/4" NPT
Air Discharge Outlet Quantity	2
Estimated Weight, Serviced	2200 lbs (997 kg)
Dimensions L x W x H in" (mm)	126.5 x 63.5 x 63 (3213 x 1612 x 1600)

Engine

Type	Diesel
Make & Model	Kohler D1903 Tier 4 Final
Idle Speed	1650 rpm
Fuel Tank Capacity	30 gal (113.5 L)
Horsepower @ Rated rpm	48.8 @ 2600 rpm
Full Load Speed	2400 rpm



D185PIZP TITAN TOP

PORTABLE COMPRESSOR 185 CFM



The D185PIZP portable air compressor, powered by an Isuzu engine, is designed with a lightweight Titan Top canopy for easy access to routine serviceable components like the oil filter and separator. Its compact design includes a foldable drawbar to minimize space during shipping and storage.

Internally, the D185PIZP features a 49hp Tier 4 Final Isuzu engine, a Sullivan-Palatek rotary screw air end, side by side coolers for the compressor and engine, a spacious curbside toolbox, a 30-gallon composite fuel tank with fuel level visibility for a 10-hour full shift, and a modern curbside controller.

FEATURES

COMPRESSOR

- » Sullivan-Palatek factory designed and manufactured 108mm Diameter twin screw Air End
- » Three year unlimited hour Air End warranty
- » Automatic 0 to 100% capacity control
- » Automatic shutdown and protection system
- » Automatic blowdown valve
- » Unloaded starting
- » Spin on oil filter/separator
- » Two Stage dry type air filter
- » Multiple service connections
- » Oil level sight gauge
- » Side by side coolers for compressor and engine
- » Cooler cleanout access for cleaning
- » Large curbside toolbox for storage
- » Composite fuel tank with fuel level visibility
- » Full shift (10 hour shift) 30 gallon fuel tank
- » 2.8 Gal per hour

EXTERIOR

- » Composite Titan Top Canopy design
- » Safety chains for towing
- » 13" Wheels
- » Choice of lunette eye or ball hitch on a foldable drawbar
- » LED Tail Lights
- » Designed to work at ambient temperatures ranging from 10 °F to +120°F
- » Cold Weather Package Option: -20°F: Includes battery heaters, engine block heater, control system heater

CONTROLLER

Sullivan-Palatek Electronic Controller (SPEC)

Digital Readouts:

- » Compressor temperature
- » Engine oil pressure
- » System Pressure
- » Engine Load
- » Engine temperature
- » Voltmeter
- » Tachometer
- » Complete engine diagnostic tool
- » Unit converter
- » Multilingual capabilities

Compressor

Model	D185PIZP
Rated Delivery @ Rated Pressure	185 cfm (5.2 m ³ /min) @ 100 psig (6.9 Bar)
Operating Pressure Range	70 - 125 psig (4.9 - 8.6 bar)
Air Discharge Outlet Size	3/4" NPT
Air Discharge Outlet Quantity	2
Estimated Weight, Serviced	2200 lbs (997 kg)
Dimensions L x W x H in" (mm)	126.5 x 63.5 x 63 (3213 x 1612 x 1600)

Engine

Type	Diesel
Make & Model	Isuzu 4LE2XABW01 Tier 4 Final
Idle Speed	1650 rpm
Fuel Tank Capacity	30 gal (113.5 L)
Horsepower @ Rated rpm	49 @ 2600 rpm
Full Load Speed	2400 rpm



D185PIZ4 TITAN GUARD

PORTABLE COMPRESSOR 185 CFM



Built with the contractor in mind, this 185 cfm compressor is a reliable ally on any job site. Providing 185 cfm at 100 psig, this machine is ideal for powering pneumatic tools and sandblasting. Our 185 cfm Tier 4 Final compressor includes two full length tool boxes, two large lockable service doors, and galvanized inner fenders. For scratch and rust protection, the exterior of the machine is up-fitted with galvaneal and powder coated sheet metal. Powered by a 49 hp diesel engine, this design has two stage air filter and large 30 gallon fuel tank for full shift duties.

FEATURES

- » 108mm Diameter Twin Screw Air End
- » Exclusive Three Year Warranty On Air End
- » Automatic 0 to 100% Capacity Control
- » Two Stage Dry Type Air Filter - External Access
- » Multiple Service Connections
- » Oil Level Sight Gauge
- » Side by Side Coolers for Compressor and Engine
- » Cooler Access Panel for Cleaning
- » Steel Fuel Tank
- » Safety Chains
- » 15" Wheels & Tires
- » Choice of Lunnette Eye or Ball Hitch on Height Adjustable Drawbar
- » Large Full Length Tool Boxes in Each Side with Lockable Handles
- » Galvaneal Enclosure
- » Galvanized Wheel Wells and Internal Panels
- » Easily Removable Upper Enclosure
- » Automatic Shutdown and Protection System
- » Automatic Blowdown Valve
- » Unloaded Starting
- » Designed to work at ambient temperatures ranging from\ 10 °F to +120°F
- » Cold Weather Package Option: -20°F: Includes battery heaters, engine block heater, control system heater

Compressor

Model	D185PIZP
Rated Delivery	185 cfm (5.2 m ³ /min)
Rated Operating Pressure	100 psig (6.9 Bar)
Operating Pressure Range	70-125 psig (4.9 - 8.6 Bar)
Estimated Weight, Serviced	2,340 lbs
Dimensions L x W x H in"	134 x 55 x 70

Engine

Type	Diesel
Make & Model	Isuzu 4LE2T Tier 4 Final
Idle Speed	1400 rpm
Fuel Tank Capacity	30 gal (113.5 L)
Horsepower @ Rated rpm	49 @ 2400 rpm
Full Load Speed	2400 rpm

CONTROLLER

Sullivan-Palatek Electronic Controller (SPEC)

Digital Readouts:

- » Compressor temperature
- » Engine oil pressure
- » Engine temperature
- » Voltmeter
- » Tachometer
- » Fuel level - low fuel warning and shutdown
- » Complete engine diagnostic tool
- » Unit converter
- » Multilingual capabilities
- » Waterproof up to six feet

CONVENIENT

Running the compressor is both safe and easy with curbside air discharge and state-of-the-art controls

EASE OF SERVICE

All new light weigh Titan Top canopy design offers both strength and improved access to all routine serviceable components

COMPACT

A smaller footprint and foldable drawbar makes shipping and storing a great advantage

MANEUVERABLE

Wider wheel base provides improved balance and stability on the highway and job site



Sullivan-Palatek Electronic Controller (SPEC)



SEE MORE



Scan to See
D185PDKR
Features Video



Scan to See
D185PIZP
Features Video

Sullivan-Palatek warrants its new portable air compressor products to be free from defects in material and workmanship, subject to the following provisions:

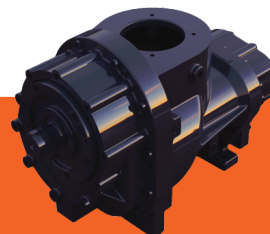
Warranty Registration: To validate the warranty for each product the purchaser shall complete and return the Warranty Registration Form within 30 days of delivery to the first user or rental.

Warranty Period: The warranty period for applicable Sullivan-Palatek products is as follows (subject to the Exclusions and Limitations noted below):

Air ends on new machines – stator and rotor assembly: Single stage compressor models: the first to expire; 42 months from shipment by Sullivan-Palatek or 36 months from delivery to the first user. Two stage high pressure compressor models: the first to expire; 30 months from shipment by Sullivan-Palatek or 24 months from delivery to the first user.

Excluded 110 cfm model

*Refer to our full written warranty statement for additional details on coverage and user obligations.



PORTABLE LINE UP

DEPENDABLE BY DESIGN



D110PKUW

KUBOTA ENGINE



D185PKR

KOHLER ENGINE



D185PDKR

KOHLER ENGINE



D185PIZP

ISUZU ENGINE



D185PIZ4

ISUZU ENGINE



D210PHKR

KOHLER ENGINE



D260PDKR

KOHLER ENGINE



D300PD2KR

KOHLER ENGINE



D375PHKR

KOHLER ENGINE



D750 & 900 SERIES

CUMMINS ENGINE



D1150PXHD1CU4

CUMMINS ENGINE



D1600PH1CU4

CUMMINS ENGINE



UTILITY MOUNTS



D185UIZ

ISUZU ENGINE



D210UHJD5

JOHN DEERE ENGINE



D260UJD5PTOW

JOHN DEERE ENGINE



ECC SERIES 50-450 HP

C-FACE ELECTRIC MOTOR



ELECTRIC CONSTRUCTION COMPRESSORS



Smart Pump Solutions

6606 Gessner Rd.

Houston, Texas 77040

+1 (281) 944 - 9377

www.smartpumpsolutions.com